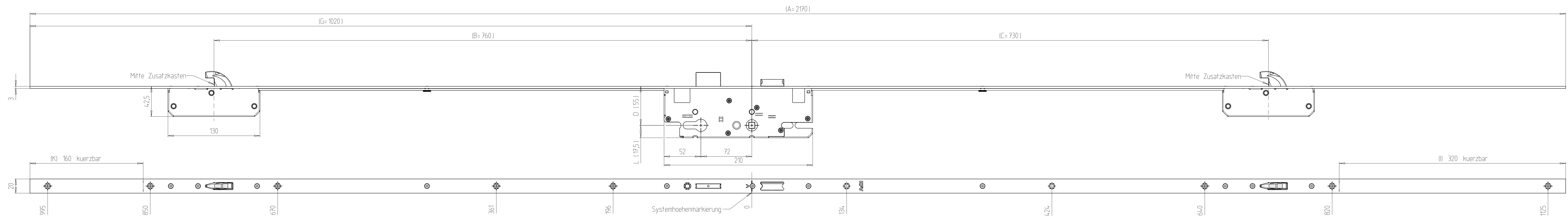


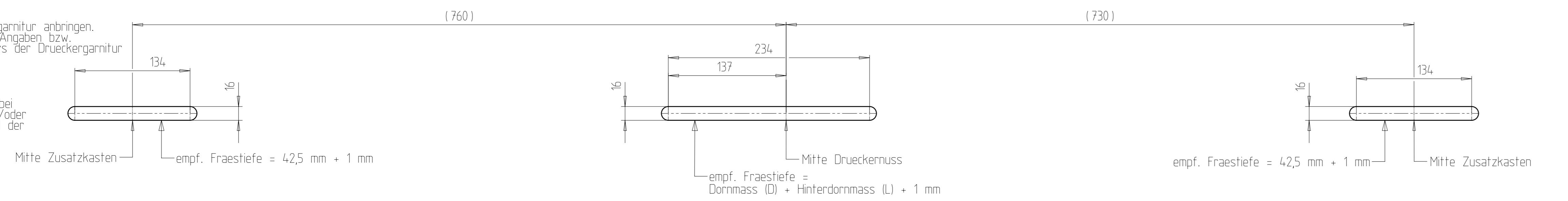
The drawing and its contents are to be kept secret from third parties, particularly competitors. The drawing and documents which go with it are not to be duplicated either in total or extract, or used in other documentation without express approval. AS and its subsidiaries reserve all rights in accordance with §2 PatG. A patent is granted.



Schlossaufnahmeaschen (M 1:3)
 Taschen mit Fraeser \varnothing 16 mm fuer Haupt- und Zusatzschlosskaesten am Tuerblatt herstellen.

Bohrungen fuer Druckergarnitur anbringen. Verwenden Sie dazu die Angaben bzw. Schablonen des Herstellers der Druckergarnitur

ACHTUNG:
 Abweichende Fraestiefen bei Sonderkonstruktionen und/oder Profilstulpen bitte anhand der Profilzeichnung ermitteln.



Qty.	Type of Modification	ANT	Drawn	Approved	Date
Volume /mm³	Weight/g	Material-No.	Item-No.	Tool-No.	
Tolerance		Part-Description			
Scale		Additional Notice			
1 : 2		F20, HS4050, SENK-NR 1			
Drawn	Ina Sellmann	Document No.		Doc. Part No.	Revision
Date	28.03.2023	1.4500.33610		055	00
Appr.	Michael Wiesner	Replacement for :		Test procedure	Status
Date	29.03.2023	Replaced by :			20
					U

